

ARICASE

CASE PACKER



Side push
or vertical



Depending on
machine type



Up to **32**
cases/minute



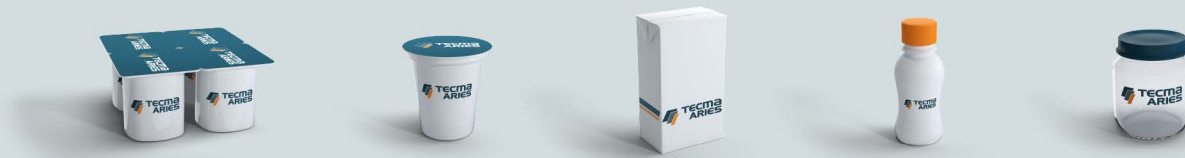
CHARACTERISTICS

- › Sequential case packers
- › Side push or vertical
- › Multiple collating devices depending on products to be packed
- › Various loading systems : robot, pick-and-place, pusher, traps

ADVANTAGES

- › Flexibility
- › Multi size
- › Compacity
- › Ergonomy

PRODUCTS



Jars
Glass bottles
Blisters
Pouches
Flowpacks

Trays
Containers
Cartons
Boxes
Packs
Ohters

CASES



American case
Case with inserts
Wrap case with two top flaps
SRP (Shelf Ready Packaging)